



Pre-sessional English | 2024

What is Pre-sessional English?

An intensive English language preparation course for international students.

Suitable for students with an offer to start a University of Stirling degree in September 2024 or January 2025.

Develop essential skills in academic writing, reading, listening and speaking.

Flexible lengths and start dates.

100%

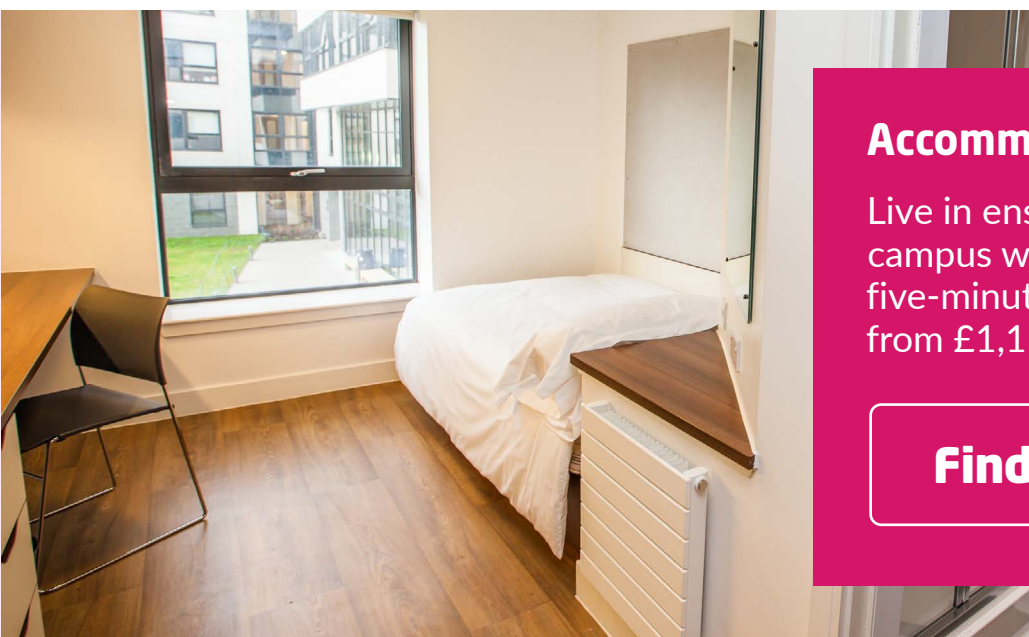
of Pre-sessional English students progress to the University of Stirling*

[Find out more about Pre-sessional English](#)

Pre-sessional English course information

	10-week course	6-week course
Delivery method	On campus	On campus
Start date	Summer course: Mon 17 Jun 2024 Winter course: Mon 30 Sep 2024	Mon 15 Jul 2024
End date	Summer course: Fri 23 Aug 2024 Winter course: Fri 27 Dec 2024	Fri 23 Aug 2024
English language entry requirements**	For students with current overall IELTS levels between 5.0 and 6.5 who need to improve their IELTS score by 1.0 in one or more skills	For students with current overall IELTS levels between 5.0 and 6.5 who need to improve their IELTS score by 0.5 in one or more skills
Academic entry requirements	Offer of a place at the University of Stirling	Offer of a place at the University of Stirling
Tuition fees	£4,700	£3,000
Age requirement	16 years and above	16 years and above
Weekly class hours	25 on average	25 on average
Maximum class size	18 students	18 students

** Only an official IELTS or other secure English language test (SELT) will be accepted as proof of English language proficiency. Visit stir.ac.uk/international/international-students/english-language-requirements for full details.



Accommodation

Live in ensuite accommodation on campus with 24/7 support, just a five-minute walk from class. Prices from £1,116 for a 6-week course.

[Find out more](#)

[Find out more about Pre-sessional English](#)

Who is Pre-sessional English for?

If you're an international student with an offer to study at the University of Stirling, Pre-sessional English will help you achieve the English language entry requirements of your degree. Depending on your current English language level, you may need to complete a compulsory course in order to start your degree course.

Example IELTS entry requirements†

Unsure which course you need to study? The table below shows example IELTS requirements for entry to Pre-sessional English and which course you should study to get you to the level required for your degree. Please visit the [University of Stirling website](#) for specific requirements for entry to your degree.

		IELTS entry requirements for Pre-sessional English	
Your University of Stirling degree entry requirements	For degree programs requiring IELTS 6.0 (with a minimum of 5.5 in all subskills)	10-week course: IELTS 5.0 (with a minimum of 5.0 in writing and no less than 4.5 in any subskill)	6-week course: IELTS 5.5 (with a minimum of 5.5 in writing and no less than 5.0 in any subskill)
	For degree programs requiring IELTS 6.5 (with a minimum of 5.5 in all subskills)	10-week course: IELTS 5.5 (with a minimum of 5.0 in writing and no less than 4.5 in any subskill)	6-week course: IELTS 6.0 (with a minimum of 5.5 in writing and no less than 5.0 in any subskill)
	For degree programs requiring IELTS 6.5 (with a minimum of 6.0 in all subskills)	10-week course: IELTS 5.5 (with a minimum of 5.5 in writing and no less than 5.0 in any subskill)	6-week course: IELTS 6.0 (with a minimum of 6.0 in writing and no less than 5.5 in any subskill)
	For degree programs requiring IELTS 6.5 (with a minimum of 6.5 in reading and writing)	10-week course: IELTS 5.5 (with a minimum of 5.5 in reading and writing and 5.0 in listening and speaking)	6-week course: IELTS 6.0 (with a minimum of 6.0 in reading and writing and 5.5 in listening and speaking)

† Alternative English language tests are accepted. Visit stir.ac.uk/international/international-students/english-language-requirements for full details.

Assessment

At the end of your course, you'll be assessed to ensure you've met the English language requirements of your University of Stirling degree.

We use a variety of assessment methods including:

- reading tests
- extended essays
- listening tests
- presentations.

Apply now